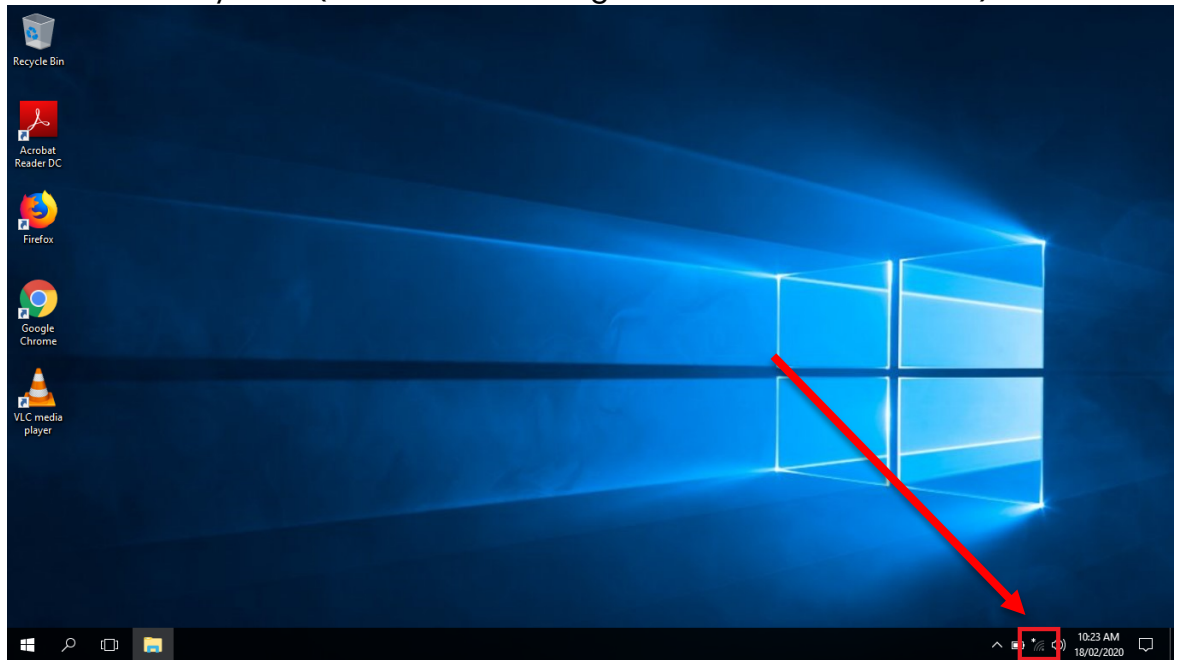




Connecting BYOD Device – Windows

PART 1 CONNECT DEVICE TO SCHOOL NETWORK

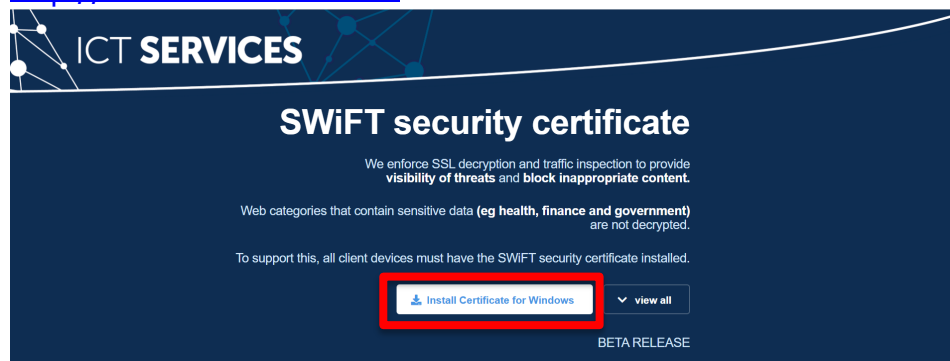
1. Log onto BYOD Device.
2. Click on WIFI Symbol (found in bottom right-hand corner of screen).



3. Choose and click on “**BRSC_Secure**”
4. Enter in your school username and password (see below for example).
 - Username → ghs\firstname.lastname
 - Password → enter your set password

PART 2 INSTALL INTERNET CERTIFICATE

1. Open a web browser and head to the following website:
 - <http://certs.swift.sa.edu.au>



2. Click **Install Certificate for Windows**



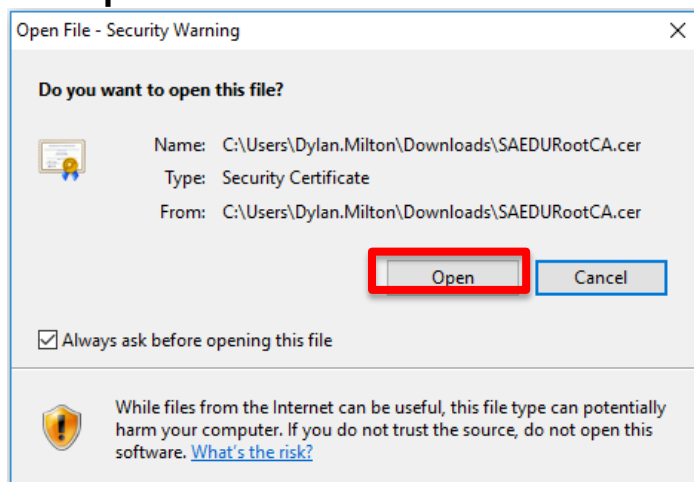
3. Click **Download** to download certificate.



4. Double click on certificate file (file is called **SAEDURootCA.cer**).



5. Click **open**.

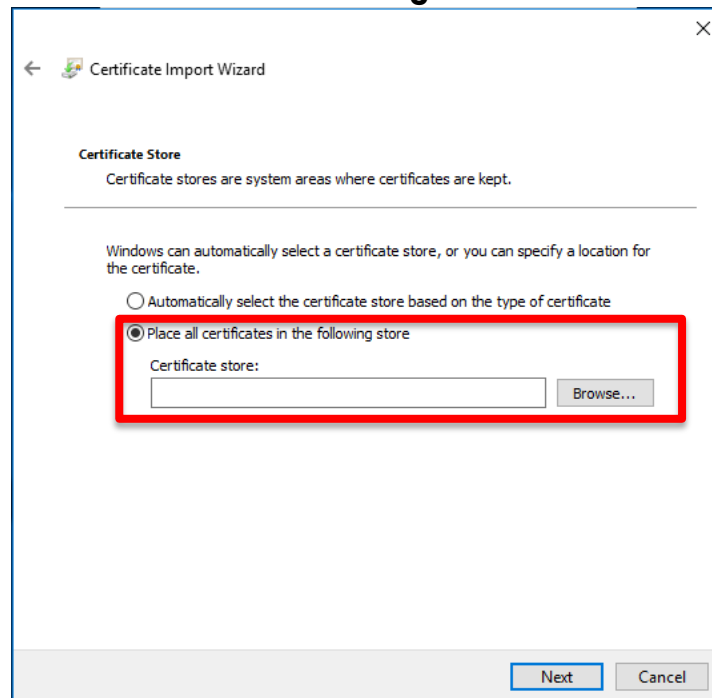


6. Click **instal certificate**.

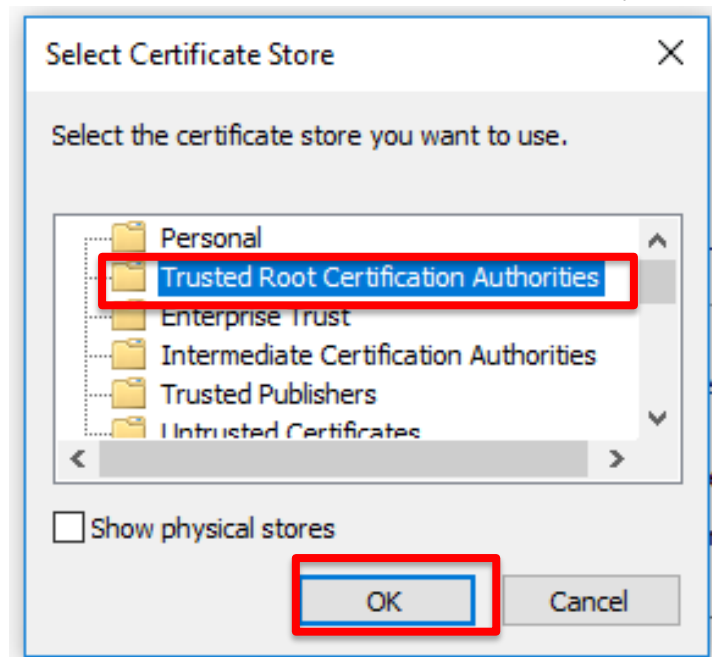




7. Choose **Local Machine**, then click **next** and then **yes**.
8. Choose **Place all certificates in the following store** and click **Browse**.

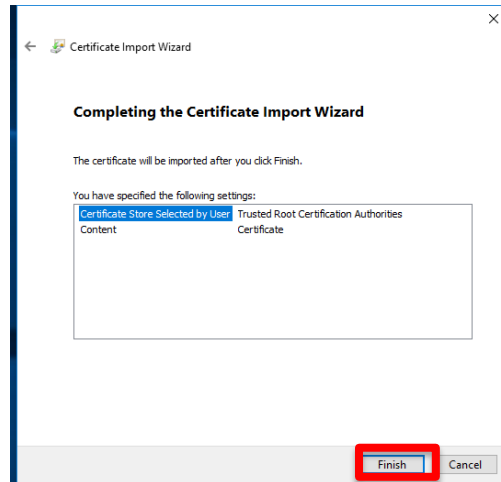


- 9.
10. Choose **Trusted root Certification Authorities** and click **ok**, then click **next**.

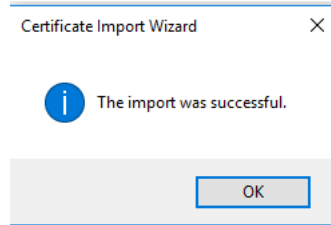




11. Click **finish**.

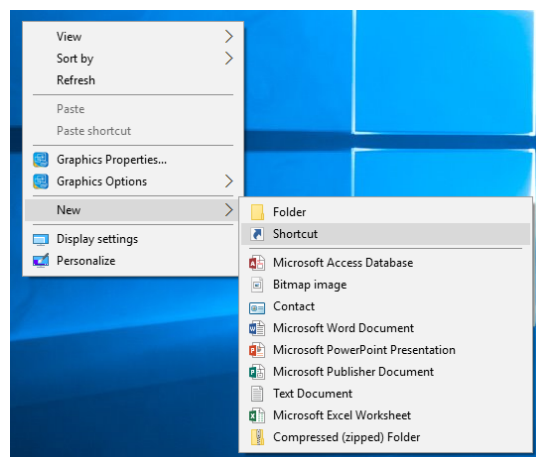


12. If successful, the following message will appear:



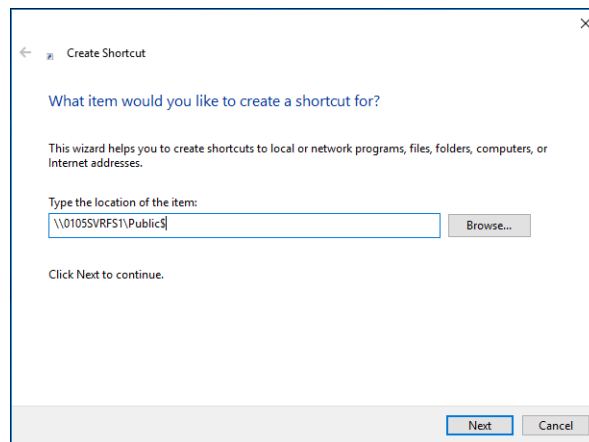
PART 3 ACCESS PUBLIC DRIVE TO INSTALL PRINTERS AND SOFTWARE

1. Right click on desktop (home screen).
2. Click **New** then **Shortcut**.





3. In **Type the location of the item**, enter **\\0105SVRFS1\Public\$**



4. Click **Next**.
5. Enter your school login details (see below for example).
 - Username → ghs\firstname.lastname
 - Password → enter your set password
6. Be sure to check the box that states **Remember my Credentials** then click **Next**.
7. Open the new shortcut on your desktop by **double clicking**.
8. Click on the Folder called **BYOD**.
9. From here you can install printers or software:
 - To install printers, open the folder called **Printers**.
 - To install software such as Microsoft Office, open the folder called **Student Software**.

If you support ICT Support can be obtained by emailing ICT.Helpdesk525@schools.sa.edu.au or booking an appointment via Student Services.